



Co op Yard Warwick Street

Manchester, M25 3HN

Asking price £615,000

****Rare Investment Opportunity in Prestwich M25: Stables in Co-op Yard****

Presenting a unique chance to acquire 6 commercial units in this prestigious building in the heart of Prestwich, M25. The stables in the co-op yard is now available for sale, offering a significant income-generating opportunity of approximately £64,500 per annum.

This commercial property is a thriving hub for small independent businesses, including personal trainers, chiropodists, Pilates classes, and record shops (to name a few) ensuring a steady stream of rental income.

Strategically located just behind Prestwich village, the property benefits from high visibility and foot traffic. Additionally, it offers parking options, enhancing its appeal to tenants and customers.

This is an extraordinary opportunity for any commercial investor to acquire a prime property in a sought-after location. Register your interest now to avoid disappointment and secure this exceptional investment.

- Rare commercial investment opportunity
- Prestwich village location
- Approx 4000 sq foot
- Parking
- Immediate income-generating opportunity of approximately £64,500

Viewing

Please contact our HomeDaze Manchester Office on 0161 691 1916

if you wish to arrange a viewing appointment for this property or require further information



null



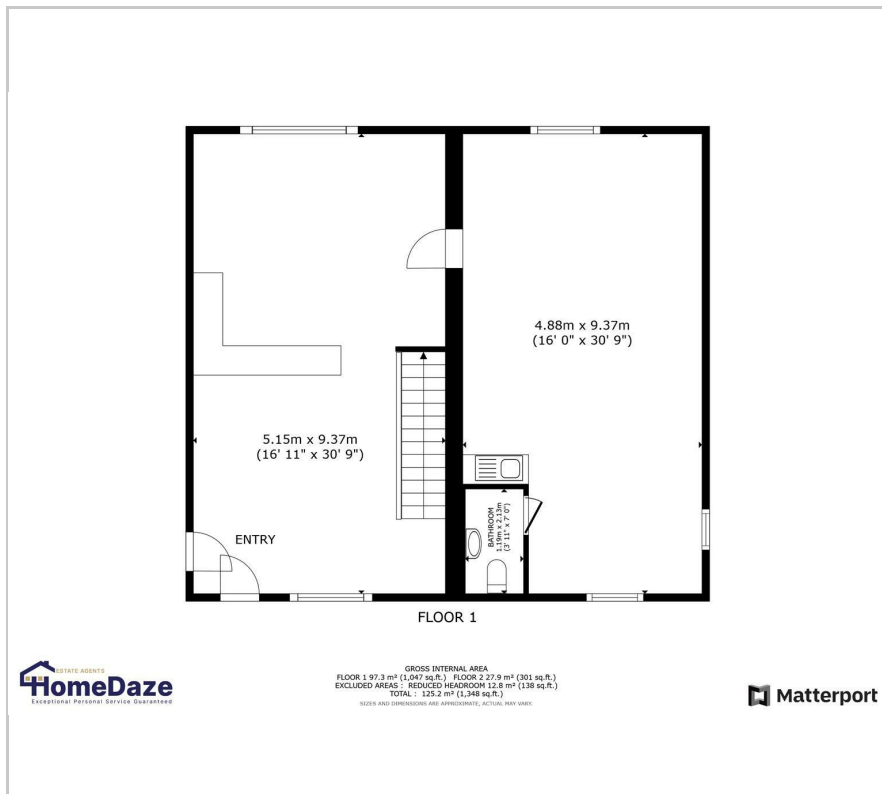
null



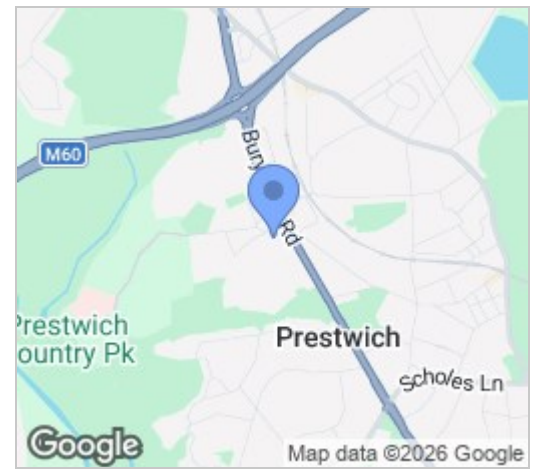
null



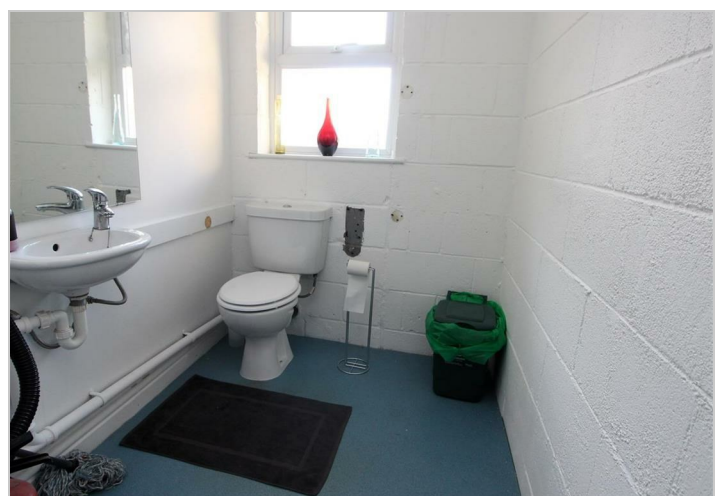
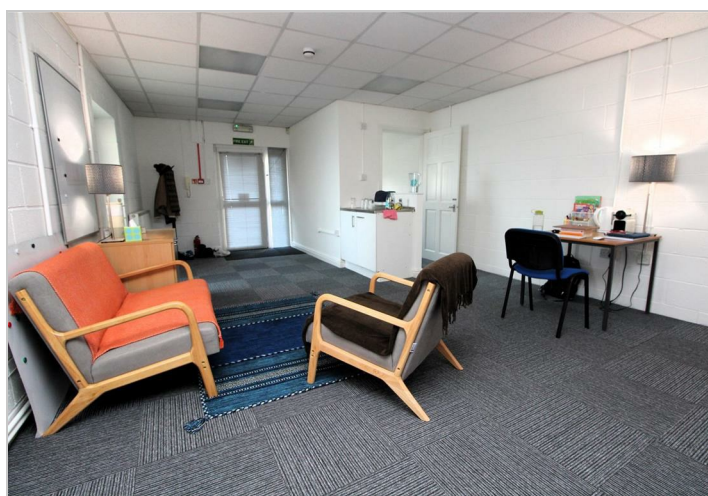
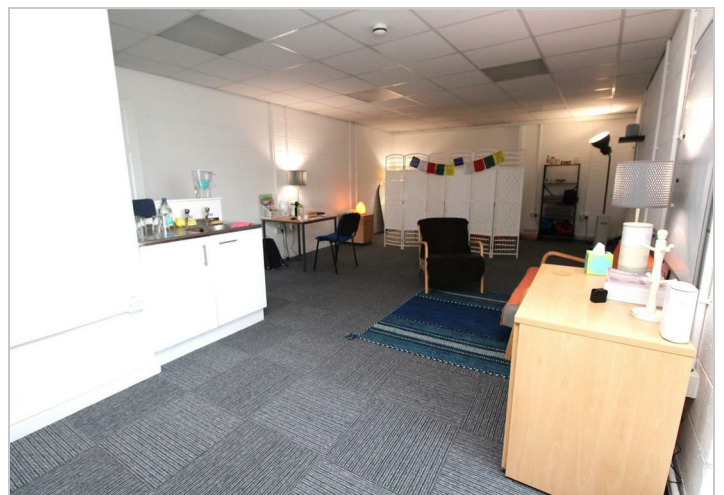
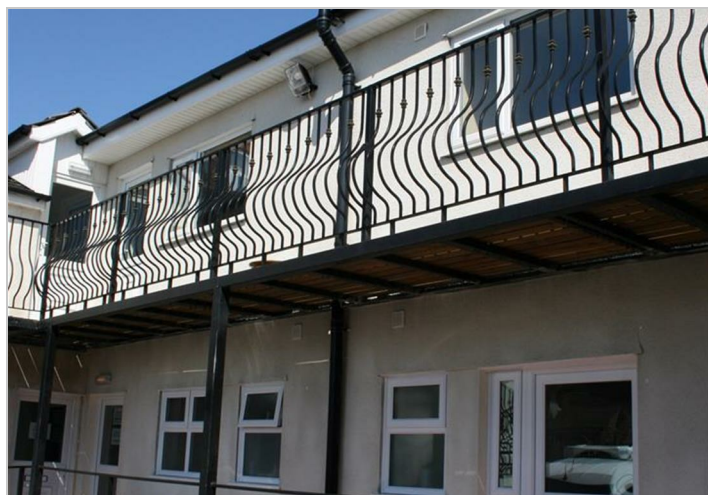
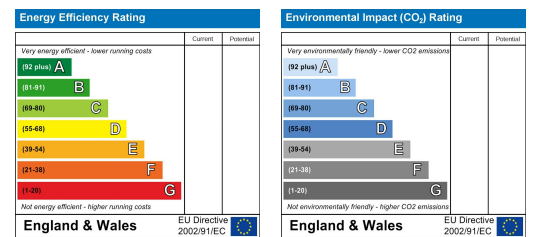
Floor Plan



Area Map



Energy Efficiency Graph



These particulars, whilst believed to be accurate are set out as a general outline only for guidance and do not constitute any part of an offer or contract. Intending purchasers should not rely on them as statements of representation of fact, but must satisfy themselves by inspection or otherwise as to their accuracy. No person in this firm's employment has the authority to make or give any representation or warranty in respect of the property.